



**infomedika**  
Enterprise Wide Information Systems

**POWERFUL  
RELIABLE  
AND BETTER  
THAN  
EVER!**

**Sage**

**Fix Assets - Workstation**

---

**SAGE Knowledge Base**



INFOMEDIKA Inc.

Derechos de Autor 2025, INFOMEDIKA, Inc.

Derechos Reservados. Prohibida la reproducción total o parcial,  
por cualquier medio sin expresa autorización del editor.

Ave. F.D. Roosevelt # 181

Hato Rey PR 00917

.....

PO BOX 11095 San Juan PR 00922

.....

Tel: 787-620-2474



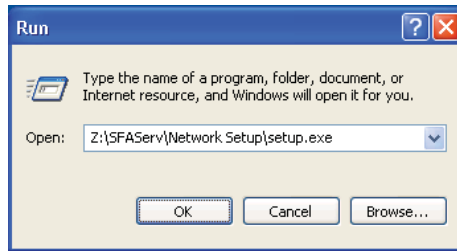
Business  
Partner

**SAGE DISCLAIMER**

This document includes information from SAGE procedural manuals and/or [www.sage.com](http://www.sage.com). Some content may reflect adaptations or adjustments made by Infomedika to meet specific customer needs in Puerto Rico. These modifications have been reviewed and approved by Sage. Infomedika does not claim ownership of the original SAGE content. For additional information, please visit [www.sage.com](http://www.sage.com) or contact Infomedika's offices.

## To install Sage Fixed Assets Reporting

1. Select Start/Run from the Windows taskbar. Run dialog appears.



### Browse

Click this button to select the SETUP.EXE file.

The default directory path is Z:\SFAServ\Network Setup\SETUP.EXE. (Substitute your network drive letter for “Z” if it is different.)

---

**Note:** If you mapped the F: drive to \SFAServ, then the path would be:  
Z:\Network Setup\SETUP.EXE

---

2. Click OK. The Client Installation dialog appears.



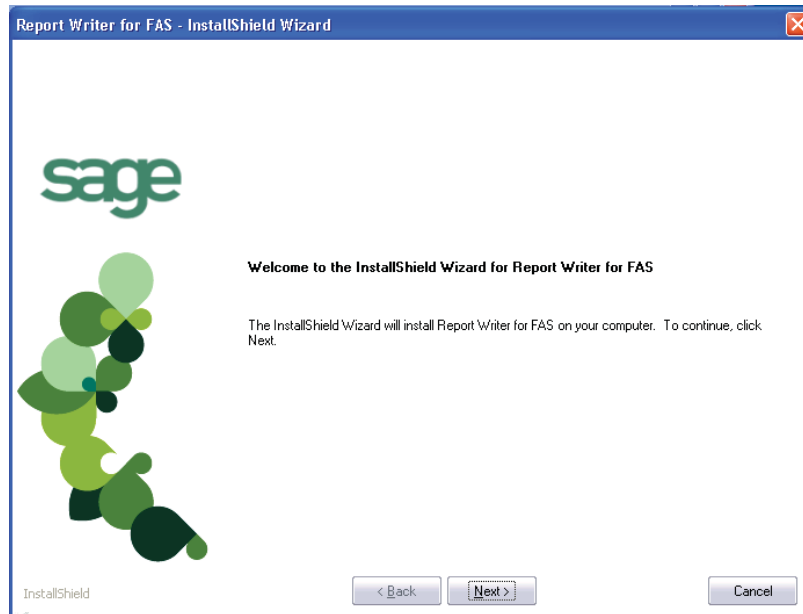
3. From the installation dialog, click the Install Sage Fixed Assets - Reporting option.

---

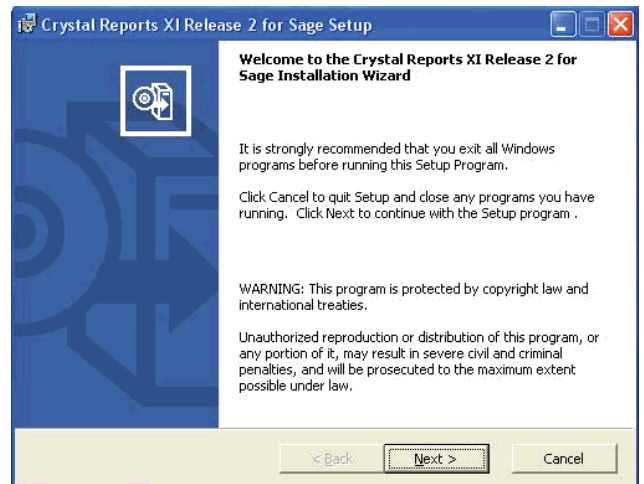
**Note:** The Install Sage Fixed Assets - Reporting option appears only if you have installed the Sage Fixed Assets - Reporting server components. For more information, see [“Step 5: Installing the Sage Fixed Assets - Reporting Server,” page 2-17.](#)

---

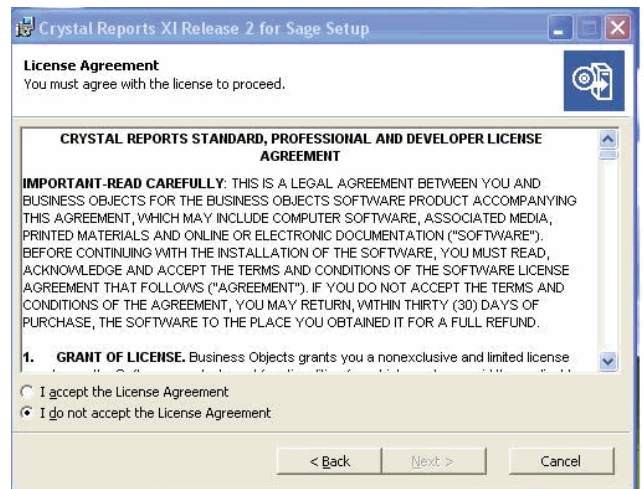
The Sage Fixed Assets - Reporting Welcome dialog appears.



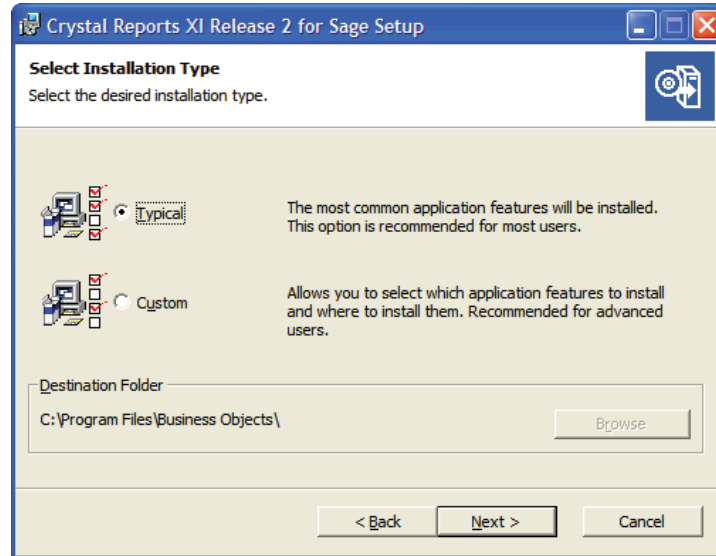
4. Click the Next button. The system displays the Crystal Reports Welcome dialog.



5. Click the Next button. The system displays the License Agreement.

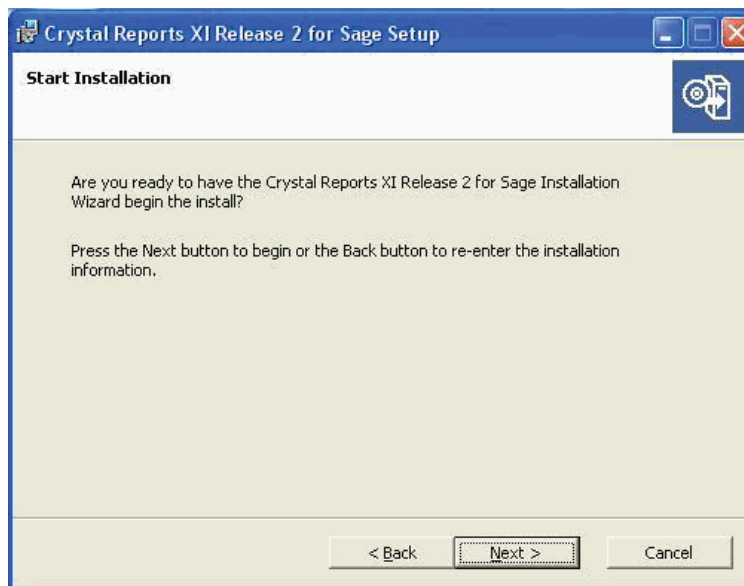


- Click the I Accept the License Agreement option button, and then click the Next button. The system displays the Select Install Type dialog.

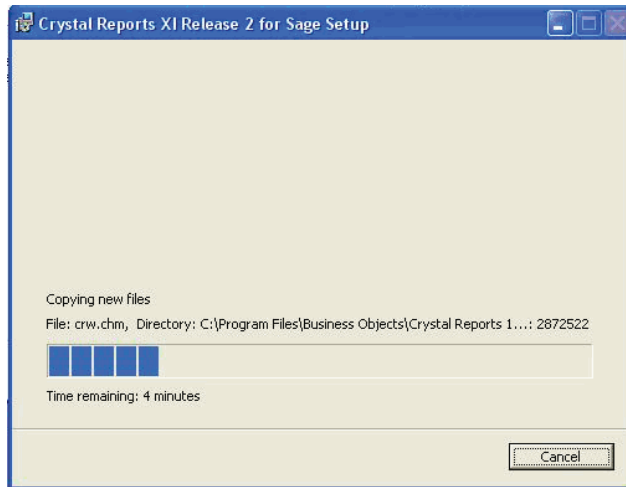


We recommend that you select the Typical installation option.

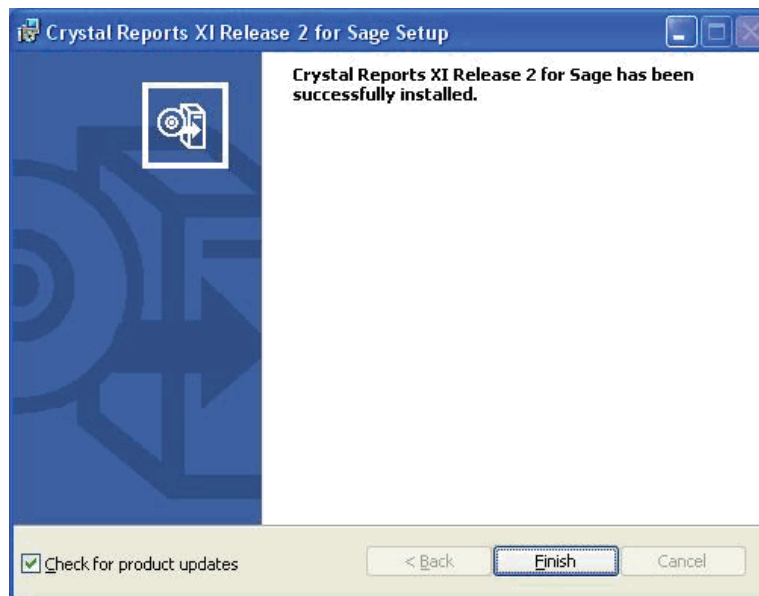
- Click the Next button. The system displays the Start Installation dialog.



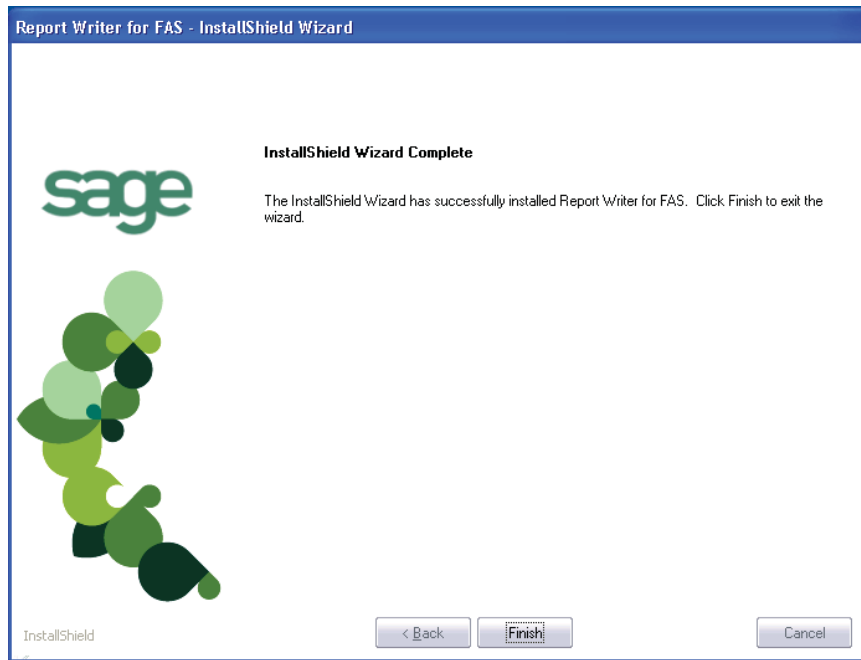
8. Click the Next button. The system begins installing the software.



When the installation is complete, a message indicates the installation has been completed successfully.



9. Clear the Check for Product Updates button.
10. Click the Finish button. The system displays the InstallShield Wizard Complete dialog.



11. Click the Finish button. The system returns to the Client Installation dialog.
12. Click the Exit button to close the dialog.

You are now ready to begin using Sage Fixed Assets - Depreciation and creating custom reports with Sage Fixed Assets - Reporting. For information on using Sage Fixed Assets - Reporting, see the online *Sage Fixed Assets - Reporting User's Guide*.