



infomedika
Enterprise Wide Information Systems

**POWERFUL
RELIABLE
AND BETTER
THAN
EVER!**

Sage

Guía para Instalar Update de SAGE

SAGE Knowledge Base



INFOMEDIKA Inc.

Derechos de Autor 2026, INFOMEDIKA, Inc.

Derechos Reservados. Prohibida la reproducción total o parcial,
por cualquier medio sin expresa autorización del editor.

Ave. F.D. Roosevelt # 181

Hato Rey PR 00917

.....

PO BOX 11095 San Juan PR 00922

.....

Tel: 787-620-2474



Business
Partner

SAGE DISCLAIMER

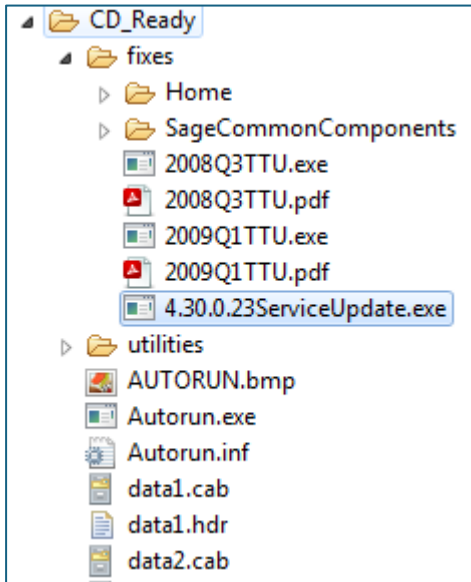
This document includes information from SAGE procedural manuals and/or [the SAGE website at www.sage.com](http://www.sage.com). Some content may reflect adaptations or adjustments made by Infomedika to meet the specific needs of customers in Puerto Rico. These modifications have been reviewed and approved by Sage. Infomedika does not claim ownership of the original SAGE content. For additional information, please visit www.sage.com or contact Infomedika's offices.

Contents

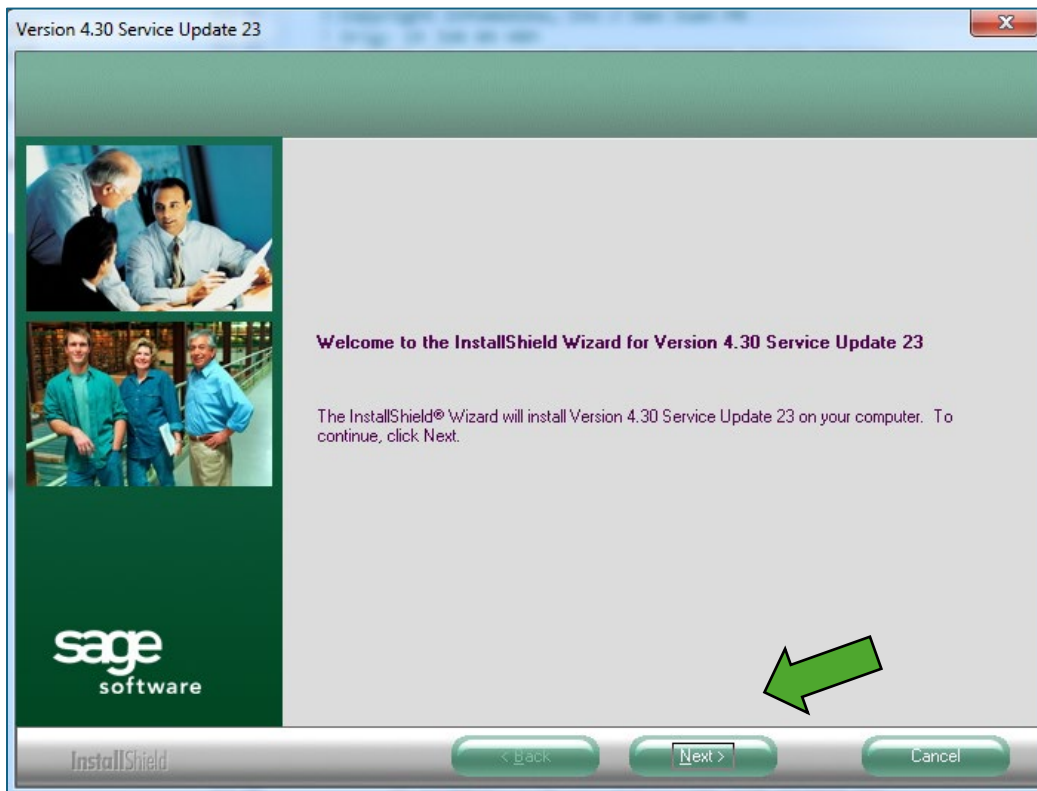
Instalador UPDATE de SAGE	4
Instalador INFOMEDIKA ENHANCEMENT	9

Instalador UPDATE de SAGE

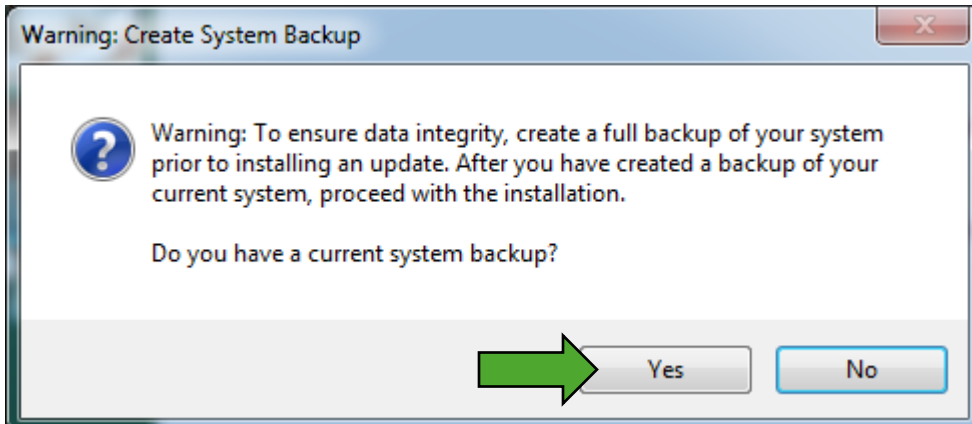
1. Dentro de CD_READY\FIXES seleccione 4.30.0.23 ServiceUpdate.



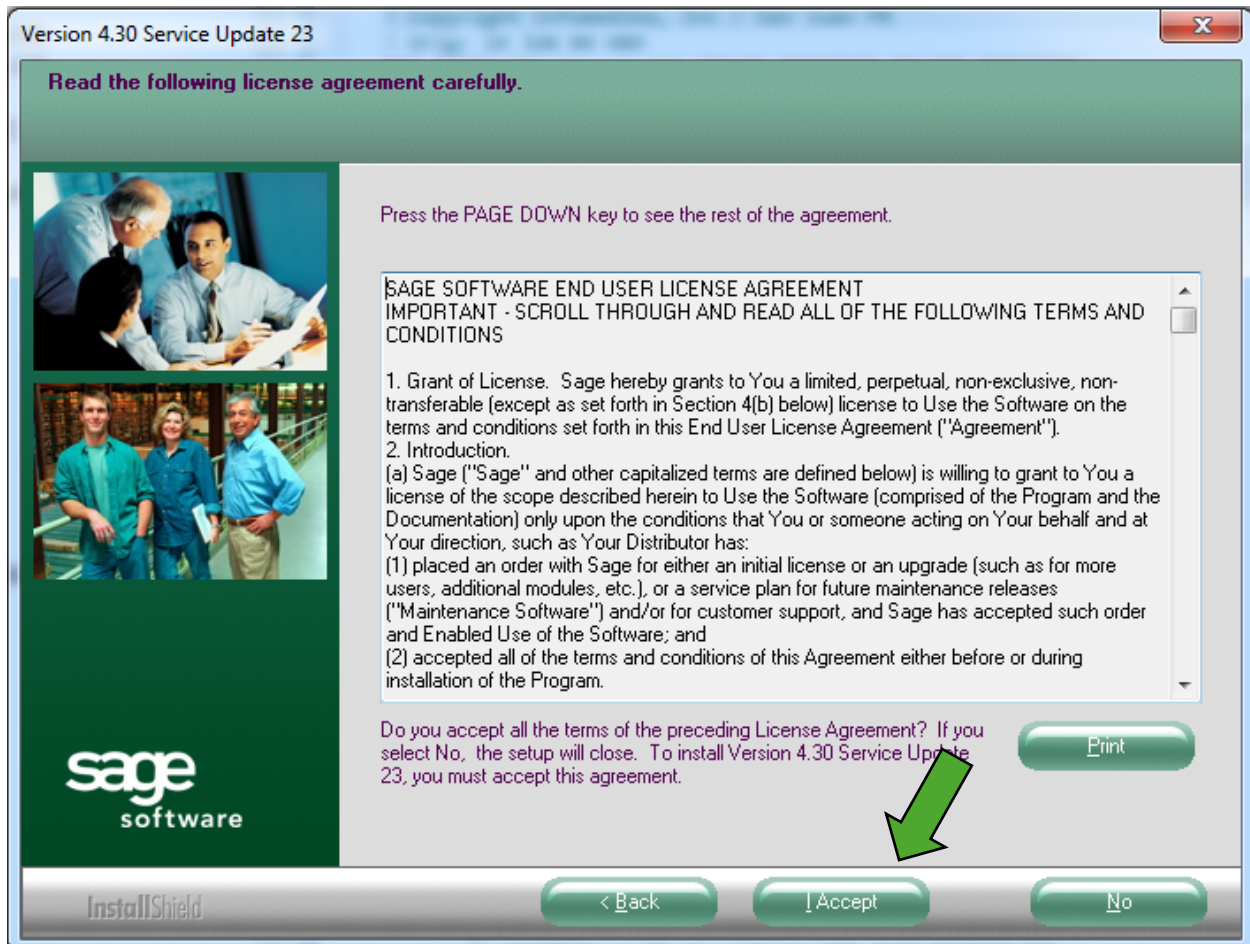
2. Este levanta el wizard.



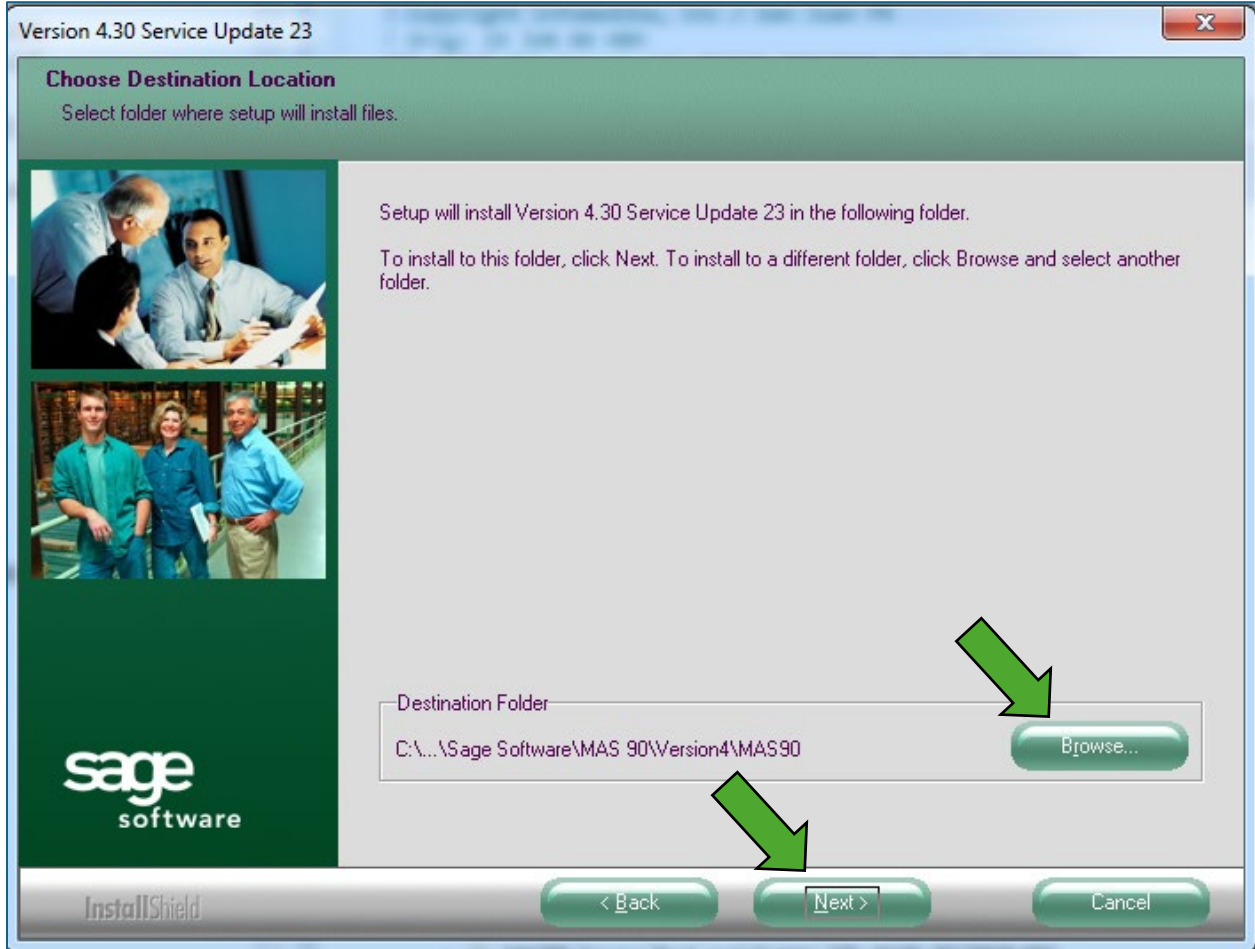
3. El sistema alerta para que tengan a mano un backup del folder MAS90 y todos sus componentes.



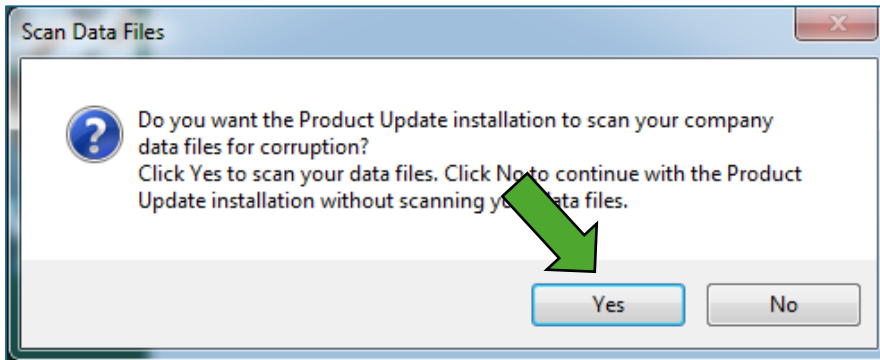
4. Acepte los acuerdos.



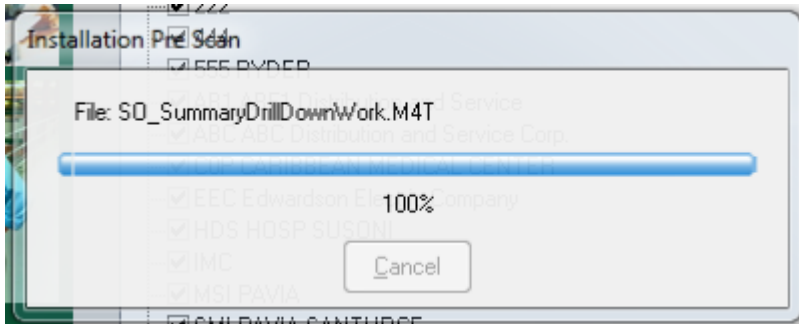
5. Utilizando el BROWSE, seleccione dónde se encuentra el folder ACCT\MAS90. Luego oprima NEXT.



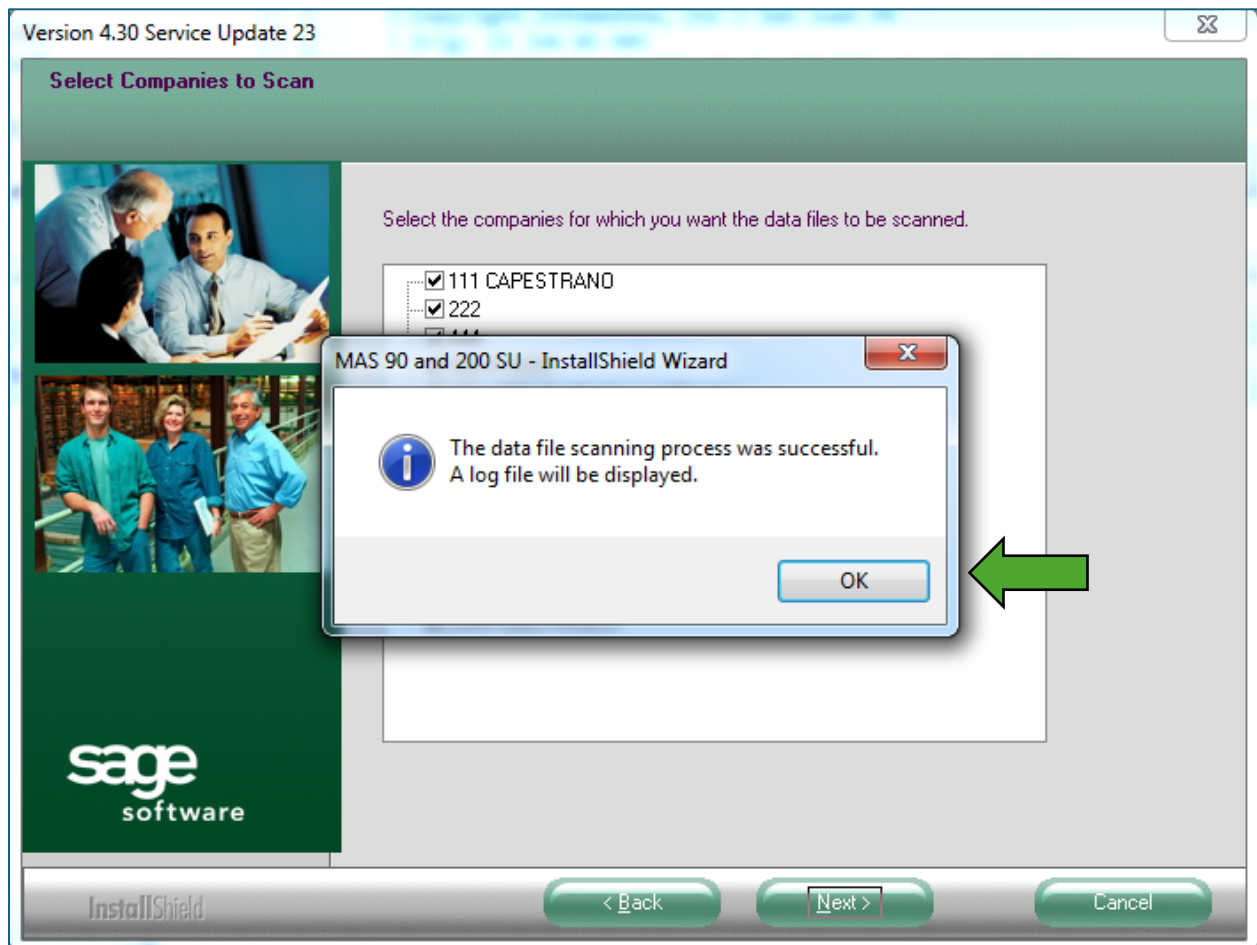
6. El sistema indica que va a verificar la data. Se recomienda oprimir YES y seleccione aquellas compañías que desea se verifiquen.



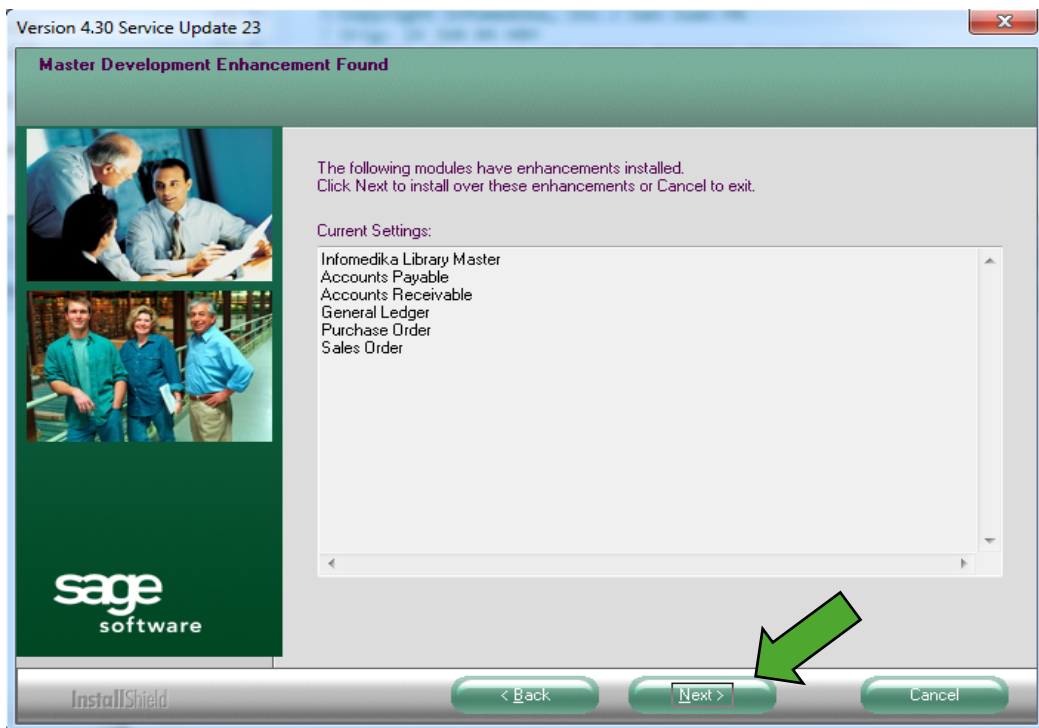
7. Corre un proceso.



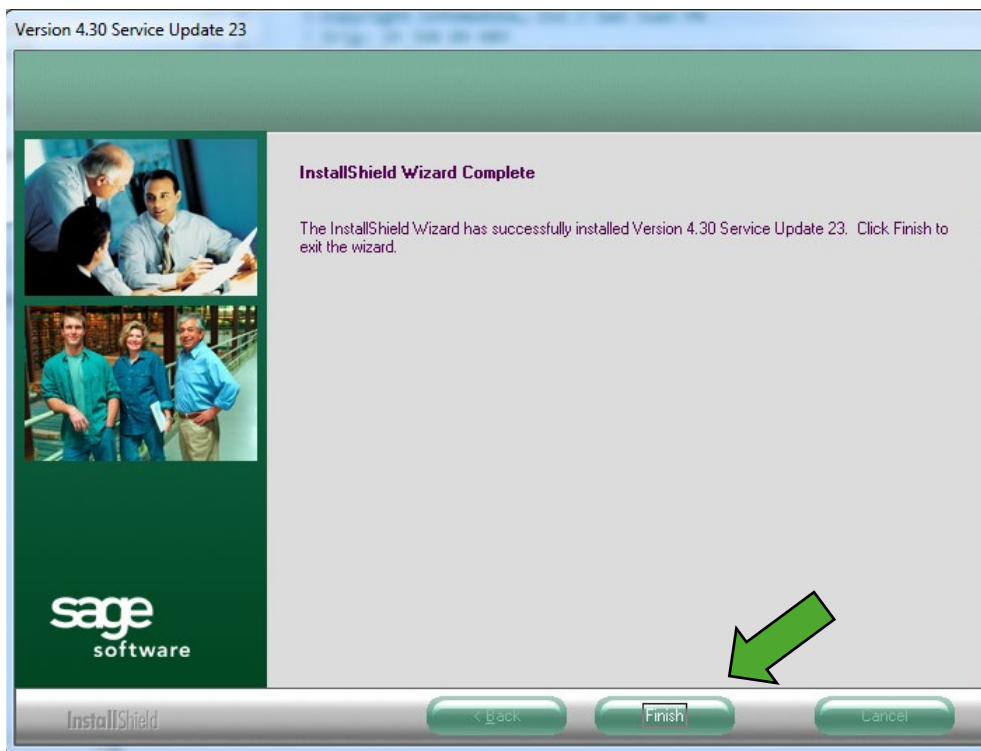
8. El sistema indica si todo corrió correctamente.



9. Oprima NEXT y luego INSTALL.

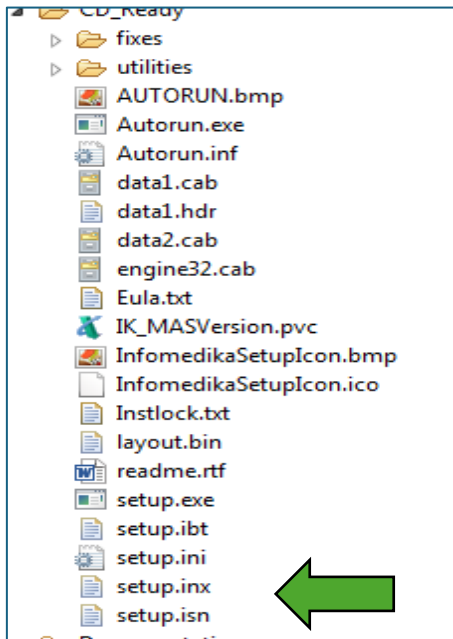


10. Cuando termine oprima FINISH.

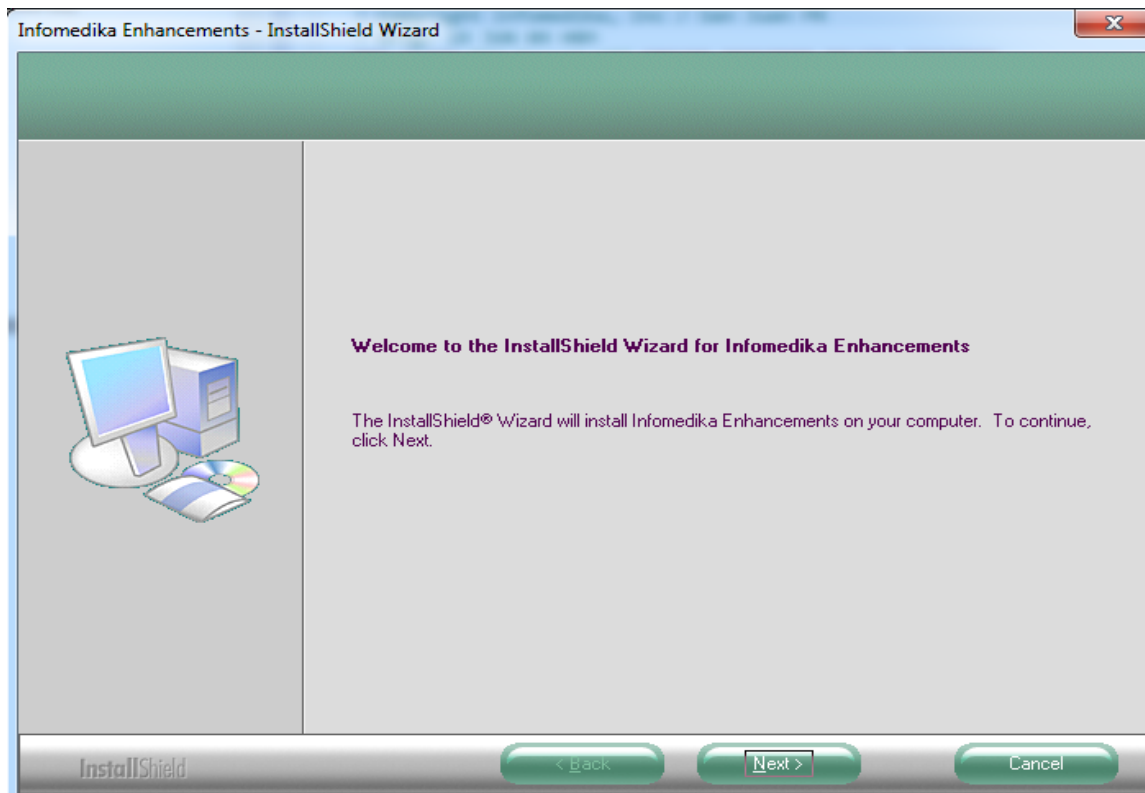


Instalador INFOMEDIKA ENHANCEMENT

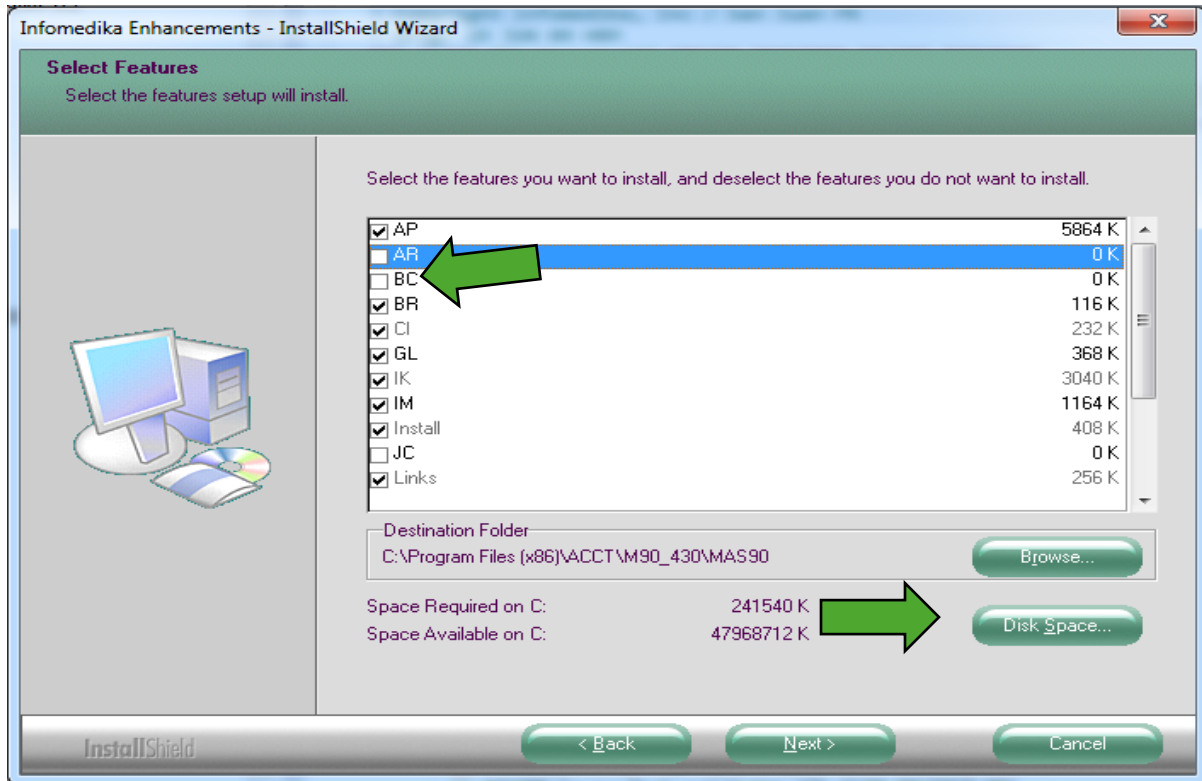
1. Para instalar nuestras modificaciones, seleccione dentro de CD_READY\SETUP.EXE.



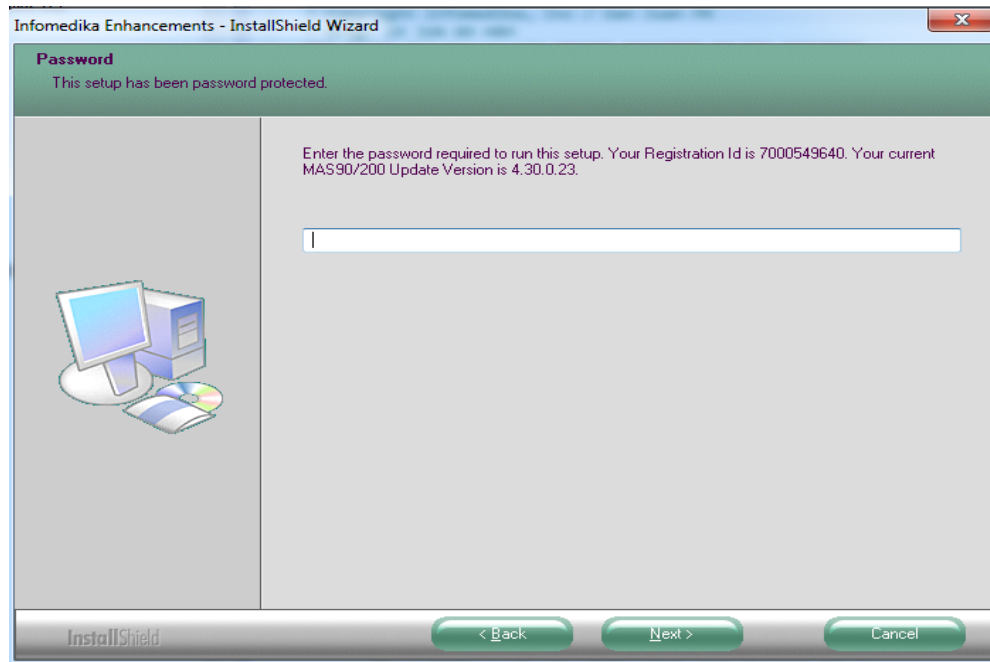
2. El sistema levanta el WIZARD.



- Desmarcar aquellos módulos que ustedes no tienen registrados AR, BC, & JC. Utilizado el BROWSE seleccione el folder ACCT\MAS90.



- El sistema le va a pedir el password de instalación, para MEDCENTRO: (807939A532EC).



5. Oprima INSTALL.

